

The LICA NEWS

Volume 22 Number 5

The Land Improvement Contractors of America

November/December, 2009



In This Issue:

Features

Phoenix, AZ	1
President's Message	2
National LICA Raffle	2
Term Life Insurance	2
National LICA Scholarship	2
Phoenix, AZ Convention	
Agenda	4
Seminars	5
Pre-Tours	6
Registration	7

*See You in
Sunny Phoenix
in February!*



Photo courtesy of the Greater Phoenix Convention and Visitors Bureau

Appropriately named "The Valley of the Sun," Phoenix, Arizona is the place to be in February! With average temperatures of 70 degrees, Arizona promises to be a relief from the cold winter. Phoenix, located along the Salt River, is the capital of Arizona and the largest city in the state.

Phoenix's breathtaking landscape includes the mountain ranges that surround it. South Mountain Park, one of the largest urban parks in the US, has over 16,000 acres of mountainous area.

This year's LICA National Convention - February 16-20 - will be an eventful one. There are several great optional tours. On Tuesday, February 16, you can get a taste of the Southwest region on a sternwheeler paddleboat cruise through the waterways of the lower Sonoran desert. On Wednesday, February 17, visit the John Deere site, with 162 acres of equipment you can see being demonstrated and/or operate yourself! After lunch, let your competitive spirit out while racing go-karts against other contractors. If equipment is not your choice, a trip to the zoo and Heard Museum may be for you. Friday night dinner will be a taste of the Old West at Greasewood Flat.

Members will also have plenty of Educational Seminars to choose from ... all geared toward improving your business. The seminars will include legislative issues, cost analysis and safety topics, to name a few. There is something for everyone.

There has been great participation in committees in the past and we know that trend will continue in Phoenix. Come to support LICA and have a great time in the process!

The LICA NEWS



The Land Improvement Contractors of America

THE LICA NEWS is the official publication of the Land Improvement Contractors of America, dedicated to the professional conservation of soil and water. LICA was founded in 1951 and is today comprised of twenty-four chapters across the continental United States.

Publisher

Eileen Levy

Contributing Writers

Jerry Biuso
Eileen Levy
Allison Hack

Art Direction

Jerry Biuso

THE LICA NEWS welcomes letters, subject to editing for accuracy and brevity. THE LICA NEWS also welcomes articles relevant to the land improvement industry. Include your name and daytime phone number for verification purposes.

Deadlines are the twenty-first of the month preceding issue date. All unsolicited material must be accompanied by a self-addressed, stamped envelope.

3080 Ogden Avenue
Suite 300
Lisle, IL 60532

PHONE: 630-548-1984
FAX: 630-548-9189
Email: nlica@aol.com

Visit our website
www.LICANational.org



A Message from the President Bruce Barnhart

The National LICA Summer Board Meeting is behind us. I want to thank Iowa LICA for hosting National and putting together some great tours. The Iowa field day was a big success, thanks to all the hard work from Iowa members and the participating associates.

A big thank you to all the members who participated at the committee meetings during the National Summer Board held in Des Moines. Committees are the backbone of this organization and are very important at every level ... district, state, and national.

Several members made the comment that, during tough economic times, their LICA membership has been more important than ever. I definitely agree with this. And the way to get the most value out of the organization is to participate. Many states are having field days and fall meetings. I would encourage you to attend all LICA meetings, including the Winter Conventions.

As the season changes once again, remember safety first. Take the time to review safety procedures for you and your employees. Your LICA safety manual can help with this. Members are our greatest asset, so try to take the time to recruit a new member.



Raffle

Be sure to purchase your raffle tickets from your Executive Director. Grand Prize is \$5,000; Second Prize: \$2,500; Third Prize: \$1,000; and Fourth Prize: \$500.

The drawing will be held at the Winter Convention Saturday, February 20, 2010 in Phoenix, Arizona. Tickets are \$25 each; you do not need to be present to win.



Term Life Insurance

Each active Contractor member receives a complimentary \$5,000 Term-Life insurance policy and \$5,000 Accidental Death & Dismemberment insurance policy. At age 65, the benefit is cut in half and discontinued at age 70. Your date of birth must be on file at the National Office to receive this benefit.



LICA Scholarships

The LICA Education Committee will be awarding three \$1,000 scholarships in 2010. To be eligible for the scholarship, you must be related to an active LICA contractor member. This includes: member, spouse, child, step-child, grandchild, or step-grandchild. The applicant must be accepted at a college, university or accredited trade school. Applications are available from your State Executive Director, the national office or on the national LICA website at www.LICANational.org. Applications must be postmarked by March 15, 2010.



LIKE A BACKHOE AND A GRADER GOOD PARTNERS ARE STRONGER TOGETHER.

www.cna.com

CNA AND LICA: A STRONG PARTNERSHIP FOR 5 YEARS.

The result of this collaboration is a commercial insurance program that offers you comprehensive services and coverages specially designed for the unique insurance needs of land improvement contractors. With CNA, you benefit from an A-rated national carrier with local industry expertise. If you're looking for a partner who can really dig into your business' risks ... **we can show you more.SM**

For more information, contact your independent insurance agent or visit www.cna.com.



Use of the term "partnership" and/or "partner" should not be construed to represent a legally binding partnership. CNA is a registered trademark of CNA Financial Corporation. Copyright © 2009 CNA. All rights reserved.

The National LICA Winter Convention - February 16-20, 2010

Sheraton Crescent Hotel ~ Phoenix, Arizona

Tentative Agenda

Tuesday, February 16, 2010

12:30pm-4:30pm Dolly Steamboat
6:00pm Executive Committee

Wednesday, February 17, 2010

6:30am-3:30pm John Deere/Racetrack
9:00am-3:00pm Phoenix Zoo & Heard Museum

Thursday, February 18, 2010

Registration

Educational Seminars

8:00am - 8:45am LICA Benefits by Allison Hack
9:00am - 9:45am Legislative by John Peterson
10:00am - 10:45am Safety Seminar by Jason Oswald, CNA
11:00am - 11:45am Emissions by John Deere
12:00pm - 1:00pm Lunch on your own
1:00pm-3:45pm Equipment Costing by Doug Egeland
3:00pm Executive Directors Meeting
Pool party for the kids
4:00pm-4:45pm National Equipment Register
6:00pm-9:00pm Exhibit Hall

Friday, February 19, 2010

7:30am-8:00am Devotions
8:00am Breakfast
9:00am-10:00am Committee Meetings
Certification
Devotions
Legislative
Water Table Management
10:15am-11:15am Committee Meetings
By-Laws
Conservation, Excavating
Ladies
Education Technology
11:30am-12:30pm Committee Meetings
Convention
Long-Term Planning/Past Pres.
On-Site Waste
Safety/Insurance
12:30pm Lunch
1:30pm-2:30pm Committee Meetings
Associates Advisory
Membership
Policy
2:30pm-3:30pm Region Meetings
Region 1 Region 4
Region 2 Region 6
Region 3 Region 8
3:30pm-4:30pm Nominating Committee
5:00pm Optional Dinner at Greasewood Flat

Saturday, February 20, 2010

8:00am-8:30am Devotions
8:30am Breakfast
9:30am-10:00am Budget Committee
10:30am-11:45am Delegate Meeting
12:00pm John Deere Luncheon
2:00pm Board Meeting & Issue Session
5:00pm CNA Insurance Reception
6:00pm Caterpillar Awards Banquet

Hotel Information

**Sheraton Crescent Hotel
Phoenix, AZ**

Room Rate: \$ 119 plus tax

Reservation Number: 800-325-3535

On-Line Registration:

www.starwoodmeeting.com/book/LICAwinterconv

Request: Land Improvement Contractors Group

OPTIONAL TOURS PHOENIX, AZ

Tuesday, February 16, 2010

Dolly Steamboat

Depart hotel: 12:30 pm

Cruise the waterways and relax while you admire the breathtaking views of the lower Sonoran desert. Along the way, your captain will tell stories of the Superstition Mountains. Bring your camera and binoculars there will be many sights to see.



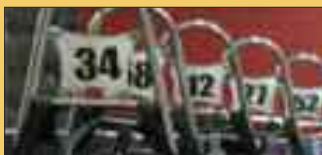
Wednesday, February 17, 2010

John Deere Proving Grounds

Depart hotel 6:30 am

Must be over 16

Want to see the state of the art equipment John Deere has to offer? Come to the proving grounds! There will be demonstrations where you will get to see the equipment in action. Members will even get in some operating time themselves. (includes breakfast & lunch)



Race Factory

After John Deere Lunch, arrive at F1 Race Factory. Drivers start your engines! It's time for LICA members to get in the driver's seat and show off your racing skills. The Race Factory is the largest karting facility in the United States and the karts go over 45 MPH!



Heard Museum

Depart hotel: 9:00 am

Known for its award-winning exhibitions, the Heard Museum uses its collections and first-person voice to tell the stories of American Indian cultures while at the same time celebrates the diverse achievements of today's artists. Come experience the history that is in the Heard Museum for yourself.

Phoenix Zoo

After the Heard Museum, arrive at the zoo. Take a walk on the wild side. The Phoenix Zoo has everything from the cute squirrel monkey to the ferocious mountain lion. Adults & kids alike will enjoy this fun afternoon! (lunch on your own)



Friday, February 19, 2010



Greasewood Flats

Depart hotel: 5:00 pm

Housed in a 120-year-old bunkhouse, Greasewood Flat is a historic place to visit. Enjoy an appetizing buffet and drinks while experiencing the cowboy way of life! Members are sure to enjoy the scenery and old west atmosphere.

Limited space. Please make your reservations early. For more information call National LICA 630-548-1984

Why stay here...



When you can go here?



Join Land Improvement Contractors in **Phoenix**
and shake off those **winter blues!**

Educational Seminars

Phoenix, Arizona

Cost Analysis

By Doug & Mary Lou Egeland

Do you know how much it costs to operate your semi or equipment? We will do a cost analysis of your employees, a semitractor and a dump truck, dozer, excavator, and backhoe. Hopefully you can apply this to your own business and know what pieces of equipment that make you loose money.

Risk Transfer for Contractors

By Jason Oswald

CNA will go through identifying and describing risk transfer mechanisms. Business loss scenarios will also be discussed. Members will learn how to identify practices to avoid business liability losses.

**Seminars will be held
Thursday, February 18, 2010**

More seminar information to
come...

Legislation By John Peterson

Our own Government Relations Liaison is going to show LICA members how to work with legislators. He will also inform members on current federal legislation. John is working on getting a local legislator to visit with us.

Keep Updated with National LICA Email Blasts

Every week you can receive the newest information on member benefits, safety, and upcoming conventions!

Please email Nlica@aol.com with your Name and State
so you can start receiving these Emails!

2010 NATIONAL LICA WINTER CONVENTION

Sheraton Crescent Hotel

Phoenix, AZ February 16-20, 2010

REGISTRATION

*(Includes: Thursday evening Opening Reception; Friday breakfast & Lunch;
Saturday breakfast, lunch & dinner)*

Company Name: _____
 Contact Person: _____
 Address: _____
 City/State: _____ Zip: _____
 Phone: _____ Email: _____

Early Bird Registration- Postmarked before January 15, 2010

Members, Spouses, Associates, Government Employees, Consultants	\$225.00	\$ _____
Youth- 13 years of age and under	\$120.00	\$ _____

REGISTRATION - Postmarked after January 15, 2010

Members, Spouses, Associates, Government Employees, Consultants	\$250.00	\$ _____
Youth- 13 years of age and under	\$140.00	\$ _____
Children 3 years of age and under		Free

Print Names for Badges (add age if youth or child)

- 1) _____
- 2) _____
- 3) _____
- 4) _____
- 5) _____

TOURS

John Deere/Racetrack	Number Attending _____
Cost \$ 65 per person	Total \$ _____
Zoo/Heard Museum	Number Attending _____
Cost \$ 25 per person	Total \$ _____
Dolly Steamboat	Number Attending _____
Cost \$ 50 per person	Total \$ _____
Greasewood Flats	Number Attending _____
Cost \$ 55 per person	Total \$ _____
Total Tours \$ _____	

ADD TOUR REGISTRATION: Please put total tour cost amount here: \$ _____

TOTAL: MEETING REGISTRATION FEES PLUS TOURS \$ _____

Registration Policy: Only individuals registered and wearing badges may attend Winter Convention events. All must register to attend conventions, programs or functions. No registration will be processed without payment. Registration fee deadlines will be strictly enforced.

Refund Policy: For cancellations received prior to February 1, 2010 a \$30.00 charge will be deducted from the original amount paid. No registration payment will be refunded after February 1, 2010 unless there has been an emergency.

For further information call: (630) 548-1984

Please return this form with payment to:
LICA Winter Convention
3080 Ogden Ave.
Lisle, IL 60532

Sheraton Crescent Hotel
Phoenix, AZ

1-800-325-3535

or online:

www.starwoodmeeting.com/book/LICAWinterconv

Room Rate: 119 plus tax

Request: Land Improvement Contractors



Land Improvement Contractors of America

3080 Ogden Avenue, Suite 300
Lisle, IL 60532

PRESORTED
FIRST-CLASS
U.S. POSTAGE
PAID
JEFFERSON CITY, MO
PERMIT 364



Don't Miss These LICA Contractor Conventions in January, 2010!

- | | | | | | |
|--------------|---|----------------|--|----------------|---|
| 4 - 6 | Ohio LICA | 10 - 12 | Michigan LICA
Best Western Midway Hotel
Lansing, MI | 17 -19 | Kansas LICA
Courtyard Marriott
Junction City, KS |
| 6 - 7 | Wisconsin LICA
Oconomowac, WI | 10 - 12 | Iowa LICA
Holiday Inn Airport
Des Moines, IA | 17 - 20 | Minnesota LICA
Holiday Inn & Water Park
Owatonna, MN |
| 6 - 8 | New York LICA
Ramada Inn
Syracuse, NY | 11 - 13 | South Dakota LICA
Sioux Falls, SD | 19 - 21 | Nebraska LICA
Holiday Inn Midtown
Grand Island, NE |
| 8 - 9 | Missouri LICA
Isle of Capri Hotel & Casino
Boonville, MO | 14 - 16 | Illinois LICA
Abraham Lincoln Hotel
Springfield, IL | 27 - 29 | Indiana LICA
Indianapolis, IN |