

The LICA NEWS

Volume 18 Number 9

The Land Improvement Contractors of America

October 2005



In This Issue:

Departments

President's Message 2

Tech Corner: 2
The Law of Unintended
Consequences

Wayne's World: 3
Alternatrive Fuels

Features

LICA Members Dig In 1

**2005 LICA Raffle
First Prize Delivery** 3

Movin' It With LICA 5

2006 LICA Winter Convention

10-Hour OSHA Class 6

Tour Descriptions 7

Ladies' Optional Tour 8

Convention Agenda 8

Servicing Airlines 9

Car Rentals 9

Hotel Arrangements 9

Children's Activities 9

Golf Outing 9

Registration Rates 10

Registration Form 11

LICA Members Dig In!

One of the unique benefits of belonging to LICA is the opportunity to become involved in a LICA-sponsored field day, expo, or restoration project. While all of us are busy trying to take care of family, service our customers and equipment, and just keep our heads above water, it may sound strange to hear someone say that they volunteered for another time-consuming construction project.



However, if you ask the members who have been involved in one of these projects, you will invariably hear that they learned something that helped them be better contractors - not to mention the great sense of accomplishment they get when the project is completed and the members can look, with pride, at job well done!

This summer, three LICA Chapters - Illinois, Iowa, and New Jersey all rolled up their sleeves and got the job done! A few snapshots of these events are included on page 5 of this newsletter.



Pictured top left:

Illinois contractors work on their Conservation Expo, August 9-11.

Pictured left:

Iowa members make more improvements on "Our Farm," July 22-23.

Pictured below:

New Jersey members gather after completing their restoration project, June 11.



The LICA NEWS



The Land Improvement Contractors of America

THE LICA NEWS is the official publication of the Land Improvement Contractors of America, dedicated to the professional conservation of soil and water. LICA was founded in 1951 and is today comprised of twenty-four chapters across the continental United States.

Publisher
Eileen Levy

Editor
Kathleen Radcliffe

Contributing Writers
Jerry Biuso
David Cantrell
Wayne Maresch

Art Direction
Jerry Biuso

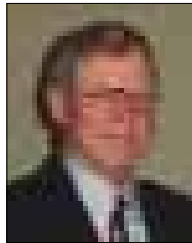
THE LICA NEWS welcomes letters, subject to editing for accuracy and brevity. THE LICA NEWS also welcomes articles relevant to the land improvement industry. Include your name and daytime phone number for verification purposes.

Deadlines are the twenty-first of the month preceding issue date. All unsolicited material must be accompanied by a self-addressed, stamped envelope.

3080 Ogden Avenue
Suite 300
Lisle, IL 60532

PHONE: 630-548-1984
FAX: 630-548-9189
Email: waynef86@aol.com
or nlica@aol.com

Visit our website
www.licanational.org



A Message from the President *Harry Hauschild*

In August, I received an e-mail from Wayne Maresch stating that the NRCS will not be entering into a Memorandum of Understanding (MOU) with LICA regarding the Technical Service Provider (TSP) assistance. It appears, according to Natural Resources Specialist Renna Owens, that LICA does not meet the requirements to adequately train, test and evaluate TSP candidates. Therefore, this issue will no longer be pursued on a national level. However, individual state chapters may enter into a MOU with state NRCS Conservation offices, as did Nebraska, if deemed necessary.

Region VI will be having its annual meeting in Hastings, Nebraska on September 23 & 24, hosted by the Nebraska Chapter. I encourage as many in Region VI to attend, since it was voted to discontinue an annual meeting in lieu of the meeting held at National Winter Conventions and Summer Meetings. I look forward to being in attendance.

With all the doom and gloom of rising fuel prices and hurricane Katrina that hit the Gulf states and the aftermath, I did find a very positive item in the Iowa LICA newsletter. They are now 380 members strong and growing toward the 400 mark. Congratulations to the Iowa Chapter for your relentless efforts to increase your membership!

I encourage other state chapters to join the band wagon of membership growth, so we ensure a strong national organization for the future of LICA.

Harry Hauschild
National LICA President

Tech Corner

by: David Cantrell
LICA Technology Committee Chairman

The Law of Unintended Consequences

There are numerous laws that affect the technology industry. Some laws are discovered through scientific research, others like the Digital Millennium Copyright Act and the Can-Spam Act are from our great legislature.

Probably the most important law called the "Law of Unintended Consequences" significantly impacts the technology industry. Federal land use policy is guilty of violating the Law of Unintended Consequences. When the federal government created all the wilderness areas, they in effect stopped technology from being able to create sufficient infrastructure, like cell towers in these areas.

Internet-based technologies are solving an array of challenges in these wilderness areas. Examples of leading edge technologies are tiny sensors that are attached to trees to monitor the health of forests. Without sufficient internet connections this cannot happen.

So, the Law of Unintended Consequences is keeping technology from protecting our forests from deadly fires and managed growth.

EXECUTIVE COMMITTEE

National Officers

Chairman
Geraldine Mulford
Florida

President
Harry Hauschild
Nebraska

Vice President
Darrell Birge
Indiana

Executive Vice President
Wayne Maresch
Maryland

Region Vice Presidents

Region I
Bob Colburn
New Jersey

Region II & Secretary
Sandy Gulick
Virginia

Region III & Treasurer
Dean Neiswinger
Indiana

Region IV
Doug Egeland
Iowa

Region VI
Howard Olstad
North Dakota

Region VII
Ted Pyle
Montana

Region VIII
Merlin Welch
California



Wayne's World

Wayne F. Maresch
LICA Executive Vice President

Alternative Fuels

This morning, the cost of a barrel of crude oil reached almost \$71.00. A number of factors contributed to this increase, not the least of which was the damage caused by Hurricane Katrina. The increase will be reflected in the price of gasoline, diesel, and home heating oil. This type of occurrence prompts some people to look at alternative fuels to operate their vehicles. Of course, we must continue to work toward using more alternative fuels as the world's supply of petroleum is finite and we must prepare for the time when it is depleted. While many of us would be open to using alternative fuels, it is possible only if your vehicle is built or modified to use them and if there is a service station that can supply them.

At present, the list of alternative fuels includes: Biodiesel (B20), Compressed Natural Gas (CNG), Electricity, Ethanol (E85), Hydrogen, Liquefied Natural Gas (LNG), Liquefied Petroleum Gas (LPG), and Methanol (M85). Of these, only biodiesel, ethanol and methanol are considered renewable, although hydrogen is limitless if we develop ways to extract it. Biodiesel is produced from soybeans. Ethanol is an alcohol obtained from plants, particularly corn and other grains. With the price of gasoline rising, it is becoming more attractive, and its increased use would greatly benefit American farmers, as would increased use of biodiesel. As mentioned before, what is needed is the proper engine modifications and the service station infrastructure to support it. This is also true of methanol, which is an alcohol obtained primarily from natural gas, but can be made from wood or waste paper. Methanol is the fuel of choice for the Indianapolis 500. It can reduce hydrocarbon emissions by 30 to 40 percent in an 85% methanol - 15% gasoline mixture, or 80 % as pure methanol.

Per gallon, methanol costs less than gasoline, but produces less energy. As a result, the cost per mile is slightly higher than gasoline. As a rule, methanol powered vehicles cost \$300 - \$500 more than gasoline powered vehicles. Ethanol has similar properties to methanol. The main exception is that ethanol is not poisonous. It may be used in a mixture of 85% ethanol to 15% gasoline, but is commonly used in a 10% ethanol mixture known as gasohol. Vehicle manufacturers produce "Flexible Fuel Vehicles" that can operate on any mixture of alcohol and gasoline. If the price of petroleum keeps rising, we will all be looking for alternative fuels.

For those who are interested in locations of service stations that handle alternative fuels look at the web site: <http://www.eere.energy.gov/adfc/infrastructure/locator.html>



↑ At the Virginia LICA Family Picnic on August 27, John Virts (center) takes possession of the 2005 NLICA Raffle's Grand Prize ... a John Deere Skid Steer. Pictured from left are: Wayne Maresch, NLICA Executive Vice President; Chris Johnson, VA LICA President, John Virts, LICA Raffle Grand Prize Winner; Dawne Virts; Julie Virts; and Sandy Gulick, LICA Region III Vice President.

5 reasons

CNA is a leader in managing claims for land improvement contractors.

1

Our Claim adjusters have the knowledge and industry expertise that enable us to process claims quickly and fairly. Our representatives are available 24/7.

2

Your agent can access cases—day or night—through our Claim Web site. We make certain claim information available, as permitted by law.

3

Our Special Investigations Unit (SIU) provides investigative solutions and fraud prevention programs to help keep claim costs down.

4

We extensively evaluate subrogation recovery opportunities and employ medical cost management services to help keep claim costs down.

5

Clients gain the expertise of CNA Staff Counsel attorneys—dedicated trial specialists with an average of 25 years of experience handling complex construction cases.

We're a great partner when you need us most.

CNA has helped manage the unique risks of land improvement contractors for nearly 40 years. Our partnership with LICA enables us to go beyond standard claim processing and provide high-quality claim administration services based on your needs. And with more than 100 years of experience providing Claim services, we're there.

To find out more about CNA, call your local independent agent or visit www.cna.com.

Movin' It With LICA

Illinois LICA Conservation Expo

The small town of Good Hope was the site of the Conservation Expo on August 9, 10, & 11. Illinois LICA with over 20 local, state and federal agencies or groups co-sponsored the Expo. During the three day event, conservation structures and practices were demonstrated, along with tile/drainage water management systems, wetland development, and septic installation, to name a few. Even the high temperatures did not dampen the enthusiasm of the over 3000 attendees.



Iowa LICA Field Days

The Field days were held on Iowa LICA's land, "Our Farm," in Melbourne, IA on July 22 & 23. With over 100 pieces of equipment on site, everyone was busy. Contractors moved 10,000 cubic yards of material, built driveways and installed tile. Other activities included safety seminars, a backhoe/excavator rodeo, and exhibits of equipment/products. Despite the heat, the over 700 attendees had two great days.



New Jersey LICA Coastal Restoration Project

On June 11, New Jersey LICA members aided the National Resource Foundation of New Jersey for the Lighthouse Center at Barnegat Bay, NJ. The facility is owned by the NJ Department of Environmental Protection, Division of Fish and Wildlife. After many years of dredging the Bay, the shoreline to the Atlantic Ocean was completely obstructed. NJ LICA volunteers removed and relocated the accumulation of material. They open the shoreline to the ocean, leveled and seeded the grounds for future use. (Pictured below, from left: the original pile of dredge material, during the event, the final level ocean view.)





55th Annual LICA Winter Convention

Myrtle Beach, SC
Radisson Plaza Hotel

February 20-25, 2006

What Do You Want From The 2006 LICA Winter Convention?

- ♦ A chance to improve your skills and increase your bottom line?
- ♦ An opportunity to make and/or renew some vital business contacts?
- ♦ A winter vacation for you and your family?

The 2006 Winter Convention has it all! Remember Savannah? This one looks even more promising! Make your plans today!

OSHA 10-Hour Class Provided by CNA

LICA and CNA strongly support safety education and safe work practices in the land improvement construction industry. We are pleased to announce that CNA will provide the OSHA 10-hour Construction Safety Class at the LICA 2006 Winter Convention. We are confident that you and your employees will benefit from this class.

This class will cover selected OSHA Standards for the Construction Industry (29 CFR Part 1926):

- ♦ Introduction to OSHA Act/General Duty Clause
- ♦ Subpart P: Excavations
- ♦ Subpart T: Demolition
- ♦ Subpart G: Signs, Signals & Barricades
- ♦ Subpart E: Personal Protective & Lifesaving Equipment
- ♦ Subpart W: Rollover Protective Structures; Overhead Protection
- ♦ Subpart I: Tools - Hand and Power
- ♦ Subpart K: Electrical
- ♦ Subpart M: Fall Protection
- ♦ Subpart O: Motor Vehicles, Mechanized Equipment

CNA Risk Control professionals David Spangler CHST, CSP, and Phil Hollins, CSP will teach the class, which will be presented in one six-hour and one four-hour session over the two-day period of Wednesday and Thursday, February 22 & 23.

The class is designed for workers (equipment operators, laborers etc.) and will teach them how to identify hazards in land improvement construction and effective ways to avoid, prevent and control these hazards. All participants completing the full 10 hours of instruction will receive a Construction 10-Hour OSHA Completion Card.

Thanks to the strong partnership between CNA and LICA, this training is being offered at the reduced rate of \$35 per participant - **an average savings of over \$100!**

Space is limited to just 35 participants, so don't delay - register you and/or your employees today!

Historic Charleston Tour

Monday, February 20, 2005

The LICA group will leave the hotel at 7:00 am for the two-hour drive to Charleston. While en route, enjoy a narrative talk about the local history and folklore, ghost legends, old rice plantations and the Low Country.

Upon arriving in Charleston, we will board horse drawn carriages for a tour of the historic old city with a professional tour guide certain to entertain and inform you. Relish the charm and beauty of Charleston, its magnificent homes and gardens and its way of life, past and present.

After the carriage ride, spend time visiting the market and see the charm of where the original settlers purchased their daily needs. Take home a remembrance ranging from Low Country hand-woven baskets made from Sweet Grass to one-of-a-kind artwork or a souvenir.

After visiting the market, we will enjoy lunch while cruising the Charleston Harbor. The boat captain will entertain you with stories of Charleston and many points of interest and historic significance.

The cruise includes a stop at Fort Sumter at the entrance to Charleston Harbor. America's most tragic conflict ignited at Fort Sumter on April 12, 1861, when a chain reaction of social, economic and political events exploded into civil war. At the heart of these events was the issue of states rights versus federal authority flowing over the underlying issue of slavery. Fueled by decades of disagreement and confrontation, South Carolina seceded in protest of Lincoln's election and the social and economic changes sure to follow. With Fort Sumter as an unyielding bastion of Federal authority, the war became inevitable. At Fort Sumter National Park, historians will provide detailed information about Fort Sumter and its pivotal role in the War between the States. There is a museum with fascinating exhibits and a small gift shop for your enjoyment.

Finally, we will depart Charleston and return to Myrtle Beach by 4:30 pm.

Historic Conway and Walden & Peggy Graham Mine Tour

Tuesday, February 21, 2006

The LICA group will leave the hotel at 8:15 am headed to Conway, South Carolina. In Conway, the past is never far away. Conway boasts of 17 sites listed in the National Register of Historic Places.

Upon your arrival, LICA attendees will be treated to a reception consisting of "fresh made" doughnuts and drinks. The reception will be followed by a tour of the area where you will enjoy local history and tidbits of folklore and tales from this river city's past. While Conway abounds with history, it offers other activities, as well. You will be afforded time to explore the revitalized historic business district. Shopping in Conway is a pleasant mix of yesterday and today.

After shopping, you will join with fellow LICA members for lunch at the mine owned by LICA members Walden and Peggy Graham. For lunch, get ready for a South Carolina style "Pig Pickin" barbecue. After lunch, there will be a number of activities going on, including equipment demonstration and a variety of entertainment.

After the activities are finished, you will load the bus for the return to the hotel at around 4:00pm.

Richardson Service and Walden & Peggy Graham Mine Tour

Tuesday, February 21, 2006

The LICA group will leave the hotel at 8:15 am. The first stop will be at the Horry County Solid Waste Authority. This state-of-the-art facility is one of the premier solid waste recycling facilities on the east coast. While at the facility, you will have the opportunity to see the "Green Power Project," a joint effort between Horry County and Clemson University.

The next stop of the day will be at Richardson Service, Inc., an equipment re-manufacturer. Richardson is a division of LICA National Associate RWF Bron. After a tour of the Richardson facility, the group will be off to the Graham Mine.

The first order of business after arriving at the mine . . . LUNCH! Roll up your sleeves and get your taste buds set for a good old-fashion South Carolina style "Pig Pickin" barbeque. The remainder of the afternoon will be filled with fun and activities. Of particular interest to LICA contractors will be equipment demonstrations and GIS/GPS demonstrations. See the latest technology in locating and working around underground utilities with a vacuum truck demonstration and many other activities still in the works. Watch upcoming newsletters as more activities are added.

The group will return to the hotel at around 4:00 pm.

Ladies' Optional Tour

Optional Ladies' Tour - Pawleys Island/Brookgreen Gardens

Thursday, February 23, 2006

Pawleys Island, South Carolina, located 25 miles south of Myrtle Beach, is known as one of the oldest summer resorts on the East Coast. This relaxed beach community has only 200 year-round residents, but thousands of part-time residents and visitors. It is often described – with pride – as "arrogantly shabby."

The families of rice planters who owned plantations on the nearby rivers first settled Pawleys Island in the early 1700s. The planters knew that it was unhealthy for their families to remain on the rivers during the summer and that the seashore was much healthier. Even though they didn't know about malaria in the 1700s, they knew enough to get away! They moved their families, livestock, bedding, provisions, and furniture to Pawleys Island in May of each year, where they remained until the first frost in November!

From this leisurely existence has developed the charm of Pawleys that still remains. Also still remaining are 12 residences in the historic district, which date from the late 1700s to the mid 1800s. Pawleys continues to be known for its shoeless, carefree, laid-back life style, which includes crabbing in the adjacent creeks, fishing, the stories of ghosts, the rope hammocks, and the unspoiled, unsophisticated, casual, delightful stretch of wide beach and sand dunes.

Pawleys Island is a barrier island less than four miles long and mostly one-house wide, separated from the mainland by a beautiful salt marsh and accessible by two short causeways. Generations of visitors have returned with the feeling that "their blood pressure goes down when they cross the causeway."

A tour guide will delight you with tall tales of the island. You will also learn the history of the Original Pawleys Island Rope Hammock which has been in production since 1889. Cool, comfortable and sturdy, the remarkable cotton hammock designed by riverboat Captain Joshua John Ward still soothes and delights all who discover it. Always hand-woven, these hammocks have long been the embodiment of Low Country craftsmanship. There will be time for shopping and lunch on your own at the Village and Hammock Shops.

Also included on your tour is a stop at Brookgreen Gardens. The gardens were founded in 1931 to preserve the native flora and fauna and display objects of art within that natural setting.

2006 Convention Agenda

SUNDAY, FEBRUARY 19, 2006

4:00pm - 6:00 p.m. Registration

MONDAY, FEBRUARY 20, 2006

7:30am - 4:30pm Tour 1
6:00pm - 7:00 p.m. Registration

TUESDAY, FEBRUARY 21, 2006

8:15am - 4:00pm Tour 2
8:15am - 4:00pm Tour 3
6:00pm - 8:00pm Registration
6:30pm - 10:00pm Executive Committee Meeting

WEDNESDAY, FEBRUARY 22, 2006

8:00am - 10:00am Registration
7:15am - 7:45am Devotions
8:00am - 8:30am Opening General Session
8:30am - 11:45am OSHA Certification Seminar
9:00am - 10:00am Employee Recruiting & Retention
9:00am Awards Committee
9:15am - 11:45am Estate Planning for the Small Business Owner
10:30am - 11:30am Insurance Coverages for Today's Contractor
12:00pm - 1:30pm John Deere Luncheon
1:45pm - 4:45pm OSHA Seminar - Continued
1:45pm - 4:15pm Retirement Planning for the Small Business Owner
1:45pm - 2:45pm Technology in Pipe Liners

WEDNESDAY, FEBRUARY 22, 2006 (Continued)

1:45pm - 2:45pm. Reasons & Recommendations for Shop Safety
3:00pm - 4:00pm Nutrient Management
3:15pm - 4:15pm Associates Advisory Meeting
5:00pm - 9:00pm An Evening of Food & Fun With the Exhibitors

THURSDAY, FEBRUARY 23, 2006

7:15am - 7:45am Devotions
7:30am - 8:00am Exhibitors Breakfast
8:00am - 9:30am The Volvo Breakfast
9:00am - 11:15am OSHA Seminar - Continued
9:00am - 11:15am GPS - The Basics
9:30am - 11:15am Hydraulic Systems - Cleaning & Preventative Maintenance
9:30am - 1:30pm. Ladies' Optional Tour
11:30am - 1:00pm CNA Luncheon:
1:00pm - 2:30pm Fleet Safety Management
1:00pm - 2:30pm OSHA Seminar -Continued
1:15pm - 2:15pm DOT and the LICA Contractor
1:15pm - 2:15pm Benefits of LICA Membership 101
1:15pm - 2:15pm Family Values Seminar
2:15pm - 2:45pm Nominating Committee
3:00pm LICA Scholarship Golf Outting

FRIDAY, FEBRUARY 24, 2006

7:30am - 8:30am Registration
7:30am - 8:00am Devotions

FRIDAY, FEBRUARY 23, 2006 (Continued)

8:00am - 8:30am Devotions Committee
8:00am - 9:00am Committee Meetings: Legislative, Long Term Planning, Water Table Management, Ladies
9:15am - 10:15am Committee Meetings: By-Laws; Cons., Earthmoving & Exc.; Technology, Safety
10:30am - 11:30am Committee Meetings: On-Site Waste Mgt., Certification, Membership, Insurance
11:45am - 12:45pm Volvo Luncheon
1:00pm - 2:00pm Committee Meetings: Policy, Convention, Public Relations, Education
2:15pm - 3:15pm Region Meetings: 1, 2, 3, & 6
3:30pm - 4:30pm Region Meetings: 4, 7, & 8

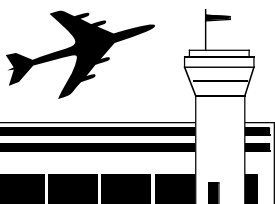
SATURDAY, FEBRUARY 25, 2006

8:00am - 8:30am Devotions
8:30am - 10:00am Executive Directors Meeting & Breakfast
9:00am - 9:30am Budget Committee Meeting
9:30am - 10:00am Executive Committee Meeting
10:30am - 12:00pm Delegates Meeting
2:00pm - 4:30pm Board Meeting & Issues Session
6:00pm - 7:00pm CNA Reception
7:00pm - 10:00pm Caterpillar Awards Banquet

NOTE: Times are subject to change.

2006 Winter Convention Information

Airport Information



You can travel to Myrtle Beach through the Myrtle Beach International Airport. Airlines serving Myrtle Beach include:

AirTran	ASA/Delta/Comair
Continental Express	Northwest
Pan Am	Spirit Air
US Airways	

Airport Rental Car Agencies



Avis	Budget	Enterprise
Hertz	National	Thrifty
USave		

Children's Activities

A number of activities are being planned for kids of all ages, including a Miniature Golf Tournament with prizes.

Pirates and Ghosts Along the Coast Tour



Blackbeard, the Gray Man and Alice are just a few of the legends of the area. Hear how the pirates roamed the coast, see where Alice lived and is buried and hear how the Gray Man helps people when a hurricane is on the way. Kids will have a treasure map to follow and fill out to win a prize at the end of the tour. It's a fun tour for

young and old alike with a tour guide that enjoys spinning a yarn and sharing a tale of long ago.

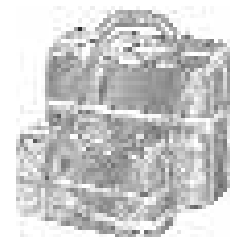
Safari Jeep Tour

Come with us on a customized safari jeep tour which has it all: history, nature, ecology, and wildlife all in one trip. It's an adventure with no special fitness level needed. You will travel in roomy, customized, safari-style jeeps with canopy tops and roll-up sides. Each jeep has a tour guide driver who is your pathfinder the entire tour, getting off with you to see the sights, narrating and answering questions. The tour begins as you buckle your seat belt. Explore the salt marsh habitat, hear tales of the buccaneers and view a pirate island off the inlet. See a 15th century style moorish castle, listen to legends and ghost lore. Go down a live road allee to a rice plantation where you will see cypress structures from the swamp, slave cabins and chapels.

And the best part? All of these children activities are included in the "Youth" and "Child" registration fees!



Hotel Information



We have negotiated a discounted guest room rate at the Radisson Plaza Hotel Myrtle Beach of \$108 plus tax (currently 13%) per night for single or double occupancy. Standard rooms are equipped with a hairdryer, iron and ironing board, high-speed internet access, working desks, Starbucks coffee in each room, and the Pacific Coast Bed Experience featuring seven layers of down-filled comfort.

Other amenities include a concierge service and an indoor pool with sundeck and fitness center. The Radisson's flagship restaurant, Vidalia's, is the place where old fashioned southern hospitality meets an open-style kitchen and innovative twists on traditional Low Country recipes. Coffee & Cream is a Starbucks-style cafe, offering a unique variety of coffees, teas and sandwiches. When night falls, guest converge at M Bar, a lounge and bar offering the finest view in Myrtle Beach.

To take advantage of the LICA Group Rate, you must make your hotel reservation by **January 20, 2006**. To make reservations, please call the Radisson Plaza Myrtle Beach at 843-918-5000, Monday - Friday, 7:00 am EST - 6:00 pm EST. You can also make reservations 24 hours a day, 7 days a week by calling the Radisson Central Reservation office at 800-333-3333. You can also go to the National LICA website (www.licanational.org) where you can register for your room through the "Your Event by Radisson," a customized website created for LICA members to make guest room reservations for the LICA Convention online at anytime.



Golf Anyone???

Make plans to play in the LICA Scholarship Golf Outing. The Outing will be Thursday afternoon, February 23, 2006. The \$38 fee includes greens fee for 9 holes and cart. Watch for more detailed information coming up soon.

Silent Auction

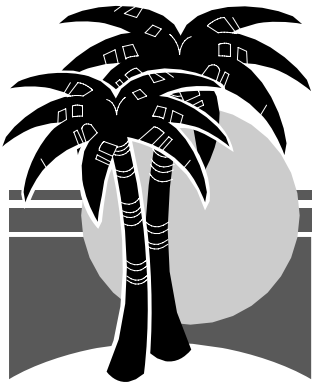
With proceeds benefiting the LICA Scholarship Program, the Ladies Committee will be holding a Silent Auction during the Exhibit Hall Show hours. If you have an item to donate to the auction, please contact Sandy Birge (765-339-7210). If you can't reach her - just bring the item to Myrtle Beach with you.



Leave Old Man Winter Behind!

After a long, cold winter ... February will be the perfect time for you to pack your bags, grab the family, and head to the beach for the 2006 LICA Annual Winter Convention!





2006 LICA Winter Convention Registration Information

55th Annual LICA Winter Convention
Radisson Plaza Hotel Myrtle Beach, SC
February 20 - 25, 2006

Convention Package Activities

Education Package

When: Wednesday & Thursday
February 22 & 23

Educational Seminars
Exhibit Hall Admittance
John Deere Luncheon
Volvo Breakfast
CNA Luncheon
Door Prize Drawings
Scholarship Silent Auction

Business Package:

When: Friday & Saturday
February, 24 & 25

Committee Meetings
Volvo Luncheon
Region Meetings
Delegates Session
Board Meeting
CNA Reception
Awards Banquet

Full Convention

When you register for the full convention package, it includes admittance to all the activities included in both the Education and Business Packages.

OSHA 10-Hour Class
The cost is \$35 per person.-
Space is limited to the first 35 registrants.

Convention Registration Packages

GENERAL REGISTRATION

Postmarked after December 31, 2005

DISCOUNT REGISTRATION

Postmarked by December 31, 2005

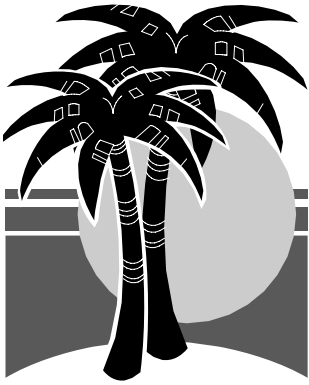
	Education Package	Business Package	Full Convention	Education Package	Business Package	Full Convention
MEMBER: Contractor, Spouse, Associate, Government Employee, Consultant	\$ 210.00	\$ 120.00	\$ 280.00	\$ 175.00	\$ 100.00	\$ 230.00
YOUTH: 13-15 years of age	\$ 135.00	\$ 85.00	\$ 180.00	\$ 110.00	\$ 70.00	\$ 150.00
CHILD: 4-12 years of age [Children 3 yrs. & under are free.]	\$ 90.00	\$ 70.00	\$ 140.00	\$ 70.00	\$ 50.00	\$ 110.00
NON-MEMBER: [Note: \$40 may be applied toward membership.]	\$ 265.00	\$ 145.00	\$ 320.00	\$ 200.00	\$ 120.00	\$ 270.00

Tour Registration Packages

TOUR

PRICE

Monday, February 20, 2006	Tour 1: Historic Charleston Tour	\$ 75 each
Tuesday, February 21, 2006	Tour 2: Historic Conway and Graham Mine Tour	\$ 45 each
Tuesday, February 21, 2006	Tour 3: Richardson Service and Graham Mine Tour	\$ 35 each
Thursday, February 23, 2006	Tour 4: Optional Ladies' Tour - Pawleys Island/Brookgreen Gardens	\$ 25 each
Thursday, February 23, 2006	Tour 5: LICA Scholarship Golf Outing	\$ 38 each



Myrtle Beach Convention Registration Form

Please return this registration form to: LICA Convention Account
 P.O. Box 425; Beaver Dam, KY 42320

Guideline for Completing Registration Form: Please indicate the Convention Package with a the following codes: E = Education Package; B = Business Package; F = Full Convention Package. Please indicate which tour or tours you'd like to attend by indicating the number of the tour.

Name & Company for Name Tags <i>(Please print)</i>	Child's Age	OSHA Class	Convention Package	Tour Number(s)	Total Amount
					\$
					\$
					\$
					\$

Payment Methods

Check or Money Order made payable to LICA Convention Account

MasterCard or Visa Number:

Expiration Date:

Print Full Name on Card:

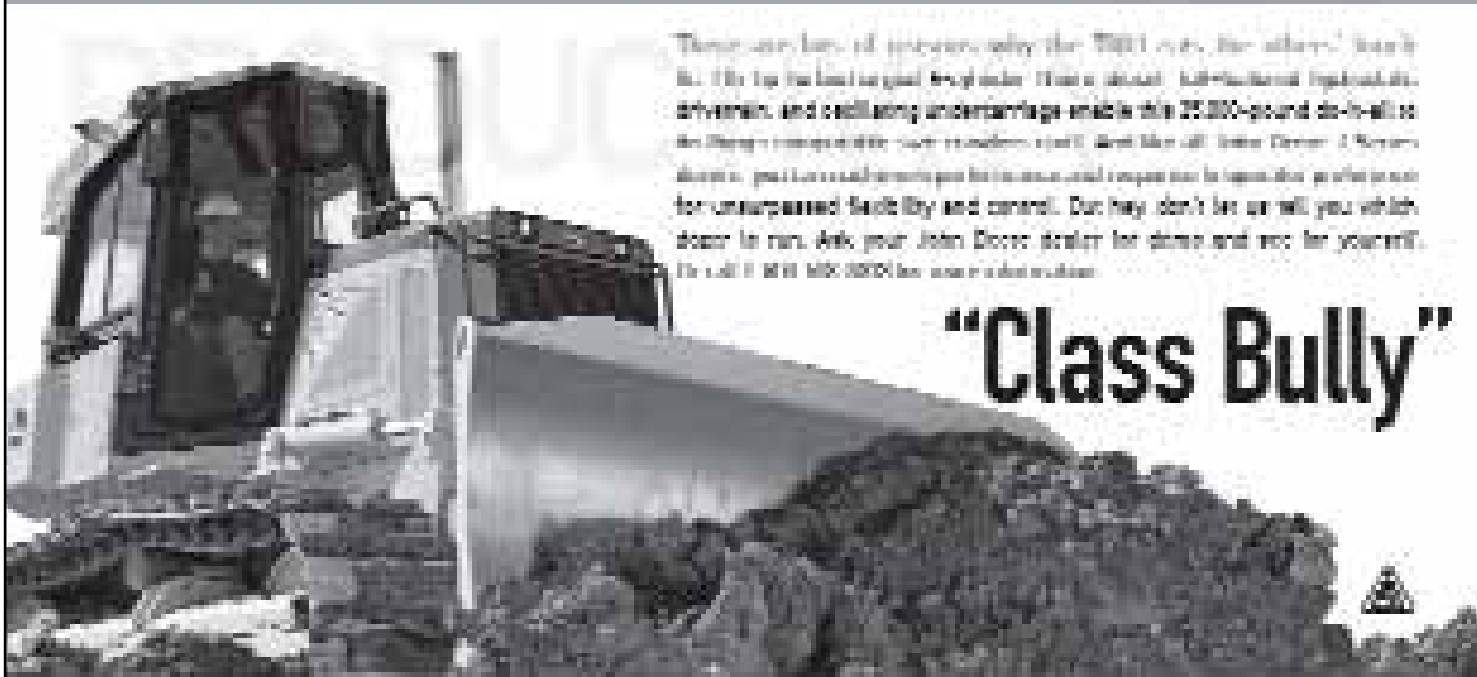
Signature:

PLEASE RETURN THIS REGISTRATION FORM TO: LICA Convention Account
 P.O. Box 425
 Beaver Dam, KY 42320

QUESTIONS: Call Paul Sandefur (270-274-3403; Fax: 270-274-4044; E-mail: ptds1@apex.net)

To register additional attendees, please copy this form.

REGISTRATION & CANCELLATION POLICY: Only individuals registered & badged may attend convention events. The spouse/guest of a registered member need not register to share hotel accommodations, but must register if they wish to participate in the program or meal functions. No registration may be processed without payment. A \$30 processing fee will be incurred on cancellations received prior to January 20, 2006. Cancellations received after January 20, 2006 will be subject to a 50% reduction in refund. No registration refunds will be available after February 4, 2006. Meals will be on an "availability basis" for on-site registrations. Registration fee deadlines will be strictly enforced.



There are lots of reasons why the 750D is the "class bully" in its class. It's got the best fuel economy. It's got a smooth, comfortable operator's seat, and oscillating undercarriage enable this 35,000-pound do-it-all to do things competitors just couldn't do. And the all-steel Deere 3-Point System means you have real leverage for increased operator leverage and protection for unsurpassed safety and control. But they don't let us tell you which dozer to run. Ask your John Deere dealer for demo and spec for yourself. Or call 1-877-333-3333 for more information.

"Class Bully"



©2004 John Deere Inc. 10797

National Land Improvement Contractors of America
3080 Ogden Avenue, Suite 300
Lisle, IL 60532

PRESORTED
FIRST-CLASS
U.S. POSTAGE
PAID
JEFFERSON CITY, MO
PERMIT 337